

## Paint & Powder Club Mission Statement

To cultivate camaraderie among members who share the love of the performing arts, by participating in social events throughout the year, culminating in an annual theatrical production. Club proceeds are donated to local charities.



The Paint & Powder Club

Incorporated 1893

June 2015

[www.paintandpowderclub.org](http://www.paintandpowderclub.org)

### *Executive Officers*

2014-2015

#### *President*

Judy Kahl

#### *President Elect*

T. Franklin Fiske

#### *Treasurer*

Edward Warren

#### *Secretary*

Betsie Ruth Johnson

#### *Past Presidents*

(*ex officio*)

William A. Moss

Frank S. (Bud) Piff

#### *Parliamentarian*

Harry E. Silverwood, Jr.

#### *Sergeant-At-Arms*

T. Franklin Fiske

#### *Resident Agent*

William Single

#### *Board of Governors*

2015

Honor Branch

William Moss

Marge Pearce

Bonnie Rose-King

Carl Zambon

2016

Judy Kahl

Carolyn Manning

Geri Schlenoff

Jane Sewell

Kandi Slade

2017

Eileen Chiat

T. Franklin Fiske

William Rose

Dr. Duke Thompson

Edward Warren

## A Message from the President

Judy Kahl

Since this is my last message to the Club as President, I'd like to recap some of the highlights. The following were the **goals and outcomes for the year...**

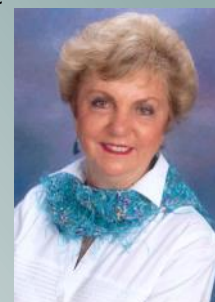
- To increase member participation on committees (8 people were added to committees or as co-chairs)
- To compile a reference file of written reports from Club events (We have reports from Cast Party 2014, Fall Outing 2014, Annual meeting 2014, Christmas Dance 2014, Mid-Winter Meeting 2015, President's Ball 2015)
- To increase recognition by the public of the Club and its purposes. (Created Publicity Committee with Co-Chairs. This committee effectively publicized "Judge Judy, The Musical" in numerous venues.)
- To increase membership (We added two new members and we have applications for two more, pending a vote.)

### Events for the year...

- The first social event of the year, the FALL OUTING, was a huge success with a record number of 99 in attendance. This Bull and Oyster Roast was co-chaired by Eileen Chiat and Geri Schlenoff.
- The ever-popular Christmas Dance was a beautiful evening chaired by Carolyn Manning. We had 82 members and guests who enjoyed the beautiful decorations and danceable music of the Ted Turner band.
- In January we held a one-time event/fundraiser called "A Concert Cabaret" at Bernie Cook's home. It was a win-win evening with guests enjoying an open bar, food, AND fabulous music provided by Bernie and Duke Thompson. This garnered \$2000 for our charities and was co-chaired by Bernie and the President.
- The President's Ball was held in late March at the Hayfields Country Club with 108 members and guests. Co-chairs for this event were Carolyn Manning, Jane Sewell, and Kandi Slade. One live auction item was sold for \$1300 which will go to our charities.
- The formation of a Performing Arts Scholarship committee was established by Chris Hergenroeder and the first award (\$1000) was presented to Dale Vaughn.
- Our production this year, "Judge Judy, The Musical" was well-received by audiences each night with a standing ovation Saturday night. The total attendance was just over 500 (four nights) and, since the show was held later than usual, the reports and figures will be forthcoming in the next newsletter by the newly elected President.

My thanks to everyone who served as chairs, co-chairs, committee members, officers, governing members, and members-at-large....in other words, my thanks to the entire Club for supporting me as your President. Being President of Paint and Powder was an honor that I shall never forget.

A handwritten signature in cursive script that reads "Judy Kahl". The signature is written in dark ink on a light blue background.



## Save the Date

June 24, 2015, 6:15 p.m.  
General Membership  
(Annual) Meeting  
Country Club of Maryland



## From The Desk Of President Elect Frank Fiske...

I am pleased to announce the nominees thus far to fill five seats on the Board of Governors. Their resumes will be presented in a separate communication and their names will be presented to the general membership for a vote at the Annual Meeting on June 24th.



Honor Branch	Carolyn Wasilewski
Liz Chuday	Len Wasilewski
Lelia Hopkins	Tina Webb
Garland McPherson	Carl Zambon

# CALENDAR

## Calendar of Events

<u>Date</u>	<u>Event</u>	<u>Location</u>
June 24, 2015	General Membership (Annual) Meeting	Country Club of Maryland
July 13, 2015	Board of Governors Meeting	Joey Chiu's
September 14, 2015	Board of Governors Meeting	Joey Chiu's
October 10, 2015	Fall Outing	TBD
October 12, 2015	Board of Governors Meeting	Joey Chiu's
November 9, 2015	Board of Governors Meeting	Joey Chiu's
December 5, 2015	Christmas Party	Towson Golf and Country Club



# JUDGE JUDY - THE MUSICAL

## May 28, 29, 30, 2015

### Brown Memorial Church



What is Ken looking at?







# JUDGE JUDY - THE MUSICAL

## May 28, 29, 30, 2015

### Brown Memorial Church





## Paint & Powder Ladies Supporting the Arts



Seated: Sandy Stellmann, Bernie Cook, Ellen Hillis, Trish Webster. Standing: Fran Rossi, Marian Drach, Judy Kahl, Betsie Johnson, Jody Duke, Carolyn Manning



Congratulations to member Alice Jacobs upon her recent engagement to John Hinterberger. We wish Alice and John much happiness!

The Performing Arts Scholarship Award was presented to Dale Vaughn, age 20. Dale was a dancer/singer in the show and will use the \$1000 toward his college education at Arizona State. Our congratulations and best wishes to Dale.

## The Walk For The Kidney Foundation



Bev Geiger, Geri Schlenoff, Eileen Chiat, Jerry Chiat



Eileen and Jerry Chiat

We would like to thank everyone for their very generous donations to help Team Jerry in the National Kidney Walk. We raised close to \$1500.00 this year.

Also thanks to Geri Schlenoff and Bev Geiger for walking with us.

Love Eileen and Jerry

## ALMONER'S REPORT

Trisha Webster

**Chris Hergenroeder** is receiving more experimental chemotherapy.

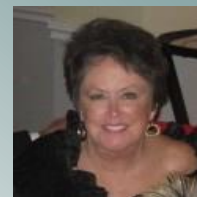
**Marge Pearce** has been diagnosed with inoperable lung cancer. She is undergoing chemotherapy without any major side effects.

**Gloria Single** continues to feel better following surgeries over the winter.

**Kandi Slade** was hospitalized with complications from COPD and is now back at home.

We want all of these ladies to know that they are in our thoughts and prayers and we wish the best for them.

*Please continue to keep Trisha notified*



Trish Webster



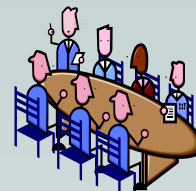


# COMMITTEES

## COMMITTEES

### BUSINESS

Advertising and Annual Show Program .....	T. Franklin Fiske, Sr.
Annual Show Venue Contract .....	Carolyn Manning, Edward Warren, Judy Kahl
June Meeting .....	John Hergenroeder
Assimilation .....	John Hergenroeder Bill Rose
Charity Selection .....	T. Franklin Fiske, Sr.
Future Planning .....	John Hergenroeder
Fundraising .....	Marge Pearce, Ellen Hillis
Graphics Consultant.....	T. Franklin Fiske, Sr.
Historian.....	T. Franklin Fiske, Sr.
Mailing Lists.....	Geri Schlenoff, Lelia Hopkins, Jody Duke, Eileen Chiat
Membership.....	Chris Hergenroeder
Mid-Winter Meeting.....	John Hergenroeder
Newsletter.....	Bill Moss
Photography .....	Jerry Chiat, Bonnie King-Rose
Promotion & Publicity.....	Leila Hopkins, Geri Schlenoff
Video.....	Don Crouch
Website.....	Bill Moss



### ENTERTAINMENT

Men's Chorus.....	Ted Gregory
Storage Locker/Costumes .....	Toni Rosenblatt, Betsie Ruth Johnson, Deb Wilson
Music and Show Director Extraordinaire .....	Bernie Cook
Assistant Director and Choreographer.....	Rod Clark



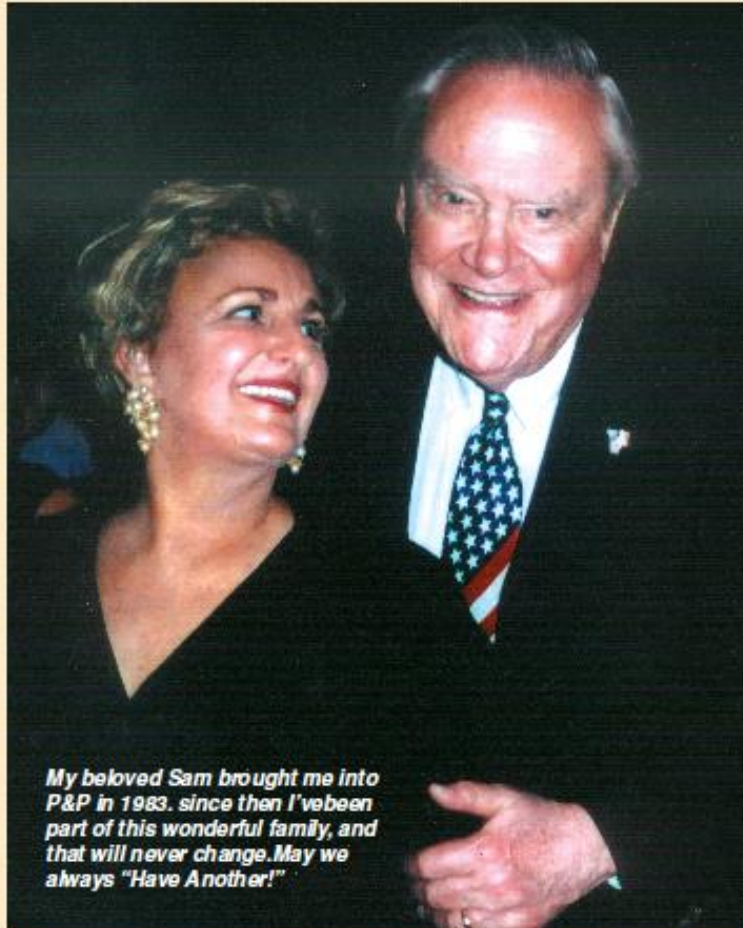
### SOCIAL

Cabaret/Show Tickets.....	Carolyn Manning
Cast Rehearsal Party .....	Tina Webb
Christmas Party .....	Carolyn Manning, Sandy Stelman
Fall Outing.....	Eileen Chiat, Geri Schlenoff
President's Ball.....	Carolyn Manning, Jane Sewell, Kandi Slade, Cheryl Moss, Bill Moss
Thank You Party.....	Trish Bitzel, Alice Jacobs, Judy Kahl



Members are encouraged to contribute to this bi-monthly newsletter.  
Please email news, photos, tidbits, odds & ends, bits & pieces potpourri...  
whatever you would like to share with the membership.

Email Frank at [tff1603@verizon.net](mailto:tff1603@verizon.net)



*My beloved Sam brought me into P&P in 1983. since then I've been part of this wonderful family, and that will never change. May we always "Have Another!"*

*If this truly should be Bernice Ann Cook's last show to write, produce, direct and accompany, the world will go on, but each of us, whose life she has touched, will never be the same. Bernie is all of the things above, but she also had to be a psychologist, a peace maker, a person of great dedication and still have enough of herself to give each of us! We know Bernie is one of the most talented people we've ever met, and we've also come to know that she is tireless in her efforts to produce Paint and Powder shows for years and years. Bernie is usually into the next show before the current one has taken it's final bow. Bernie even persuaded her beloved husband Sam Cook to serenade everyone with his harmonica during shows, and then he got to like it....a lot.*

*Bernie made stronger, better people of us. She gave of herself endlessly, and all she asked in return was to "sit down and listen to me, you're gonna like it"*

*Bernie, you always found a spot for every person that ever auditioned! There may have been times when it took a little more imagination, but no one——was ever turned away! They came in for auditions with casts, post op bandages, canes, walkers, you name it. None of which were props!*

*From all of us, we give our love and gratitude that will span the tides of time.*

*We will not say goodbye, just in case you get a terrible urge to "Have Another" show!*



**The membership of the Paint & Powder Club  
thanks our President Judy Kahl for her  
outstanding leadership in 2014-2015**



**PRESIDENT JUDY KAHL**